

## Tait 2020 Hotspot Information

### 9 Way D-Type Pin Out

Pin	Signal
1 –	Modulator Input
2 –	Busy
3 –	Discriminator Output
4 –	PTT
5 –	Ground

*N.B. Please fit a 10uf DC decoupling capacitor if it is not fitted to your node adaptor board*

### Setting for the Satoshi Board COS Hardware circuit

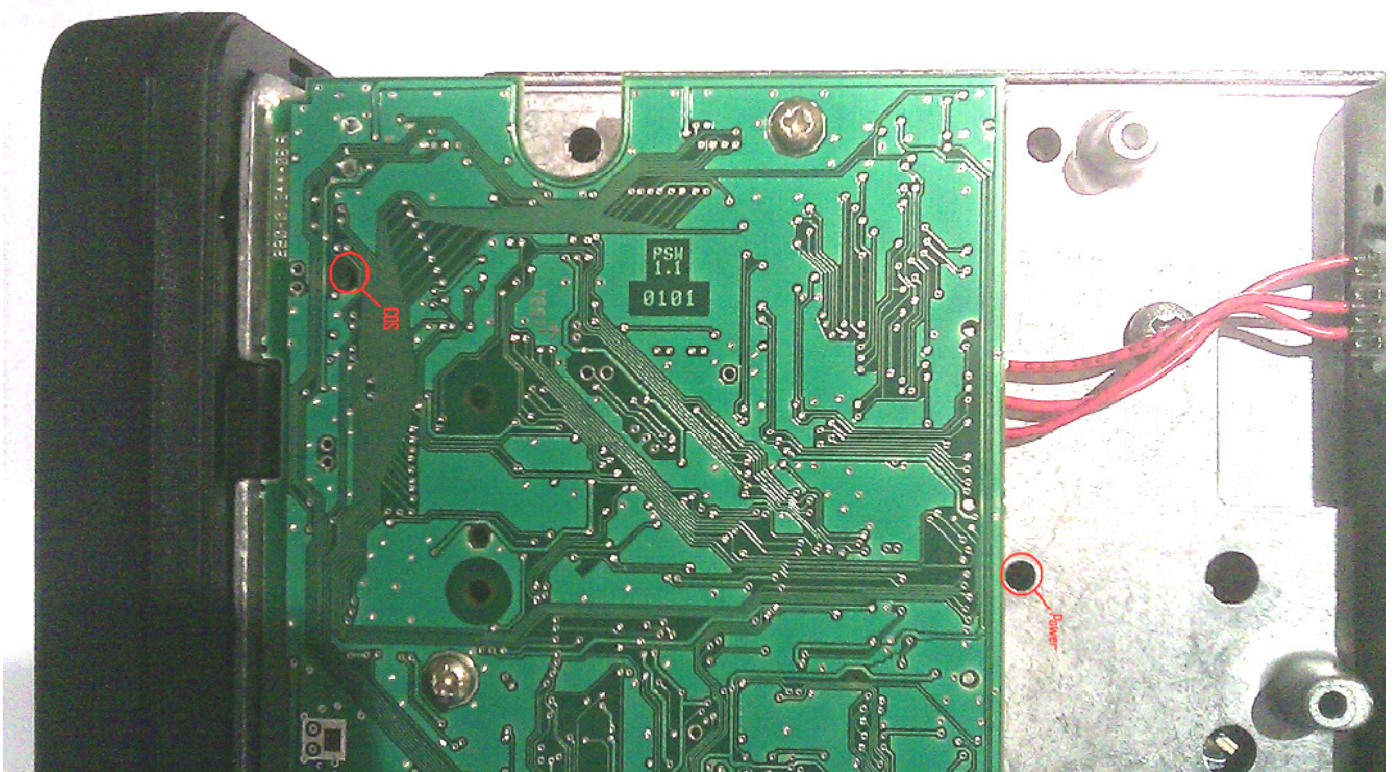
- Set SW1 – On
- Set SW2 – Off
- Set SW3 – 1&2

### Setting for the Satoshi Firmware

- Set TX to invert.
- Set RX to auto sense

### Adjusting the Output Power and COS signal

Adjustments must be carried out with a ceramic or plastic tool, Under **NO** circumstances should a metal screwdriver/tool be used  
When adjusting the power Do Not exceed 25watts



### Cooling

When using these units above 5Watts, please fit an external fan to provide forced air cooling.